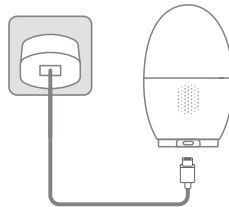


## Quick Start Guide

Pan/Tilt AI Home Security  
Wi-Fi Camera

1. Insert the USB cable into the camera's type-C port, and connect it to a power outlet.



2. Get the Tapo app from the App Store or Google Play, and log in.



OR



3. Tap the (+) button in the app and select your model. Follow the app instructions to complete setup.

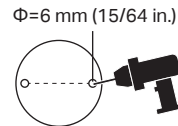
## Set Up Your Camera

## Mounting Instructions

### Option 1: Wall Mounting

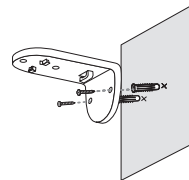
#### 1. Drill Holes

Place the mounting template where you want the camera. Then drill two holes through two circles.



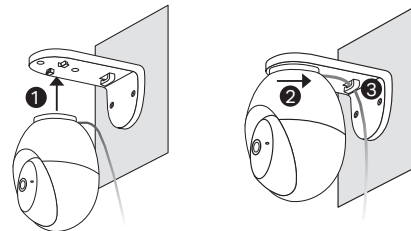
#### 2. Install the Bracket

Insert two anchors into the holes and use the screws to affix the bracket over the anchors.



#### 3. Secure the Camera

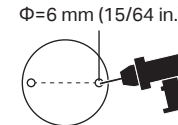
Align the snap fit and slide the camera onto the bracket from outside in until it clicks into place. Route the USB cable under the buckle on the bracket.



### Option 2: Ceiling Mounting

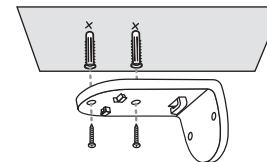
#### 1. Drill Holes

Place the mounting template where you want the camera. Then drill two holes through two circles.



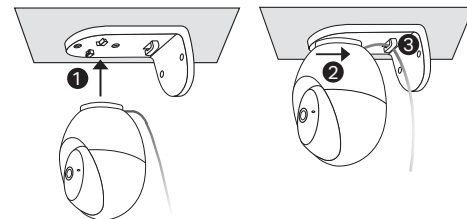
#### 2. Install the Bracket

Insert two anchors into the holes and use the screws to affix the bracket over the anchors.



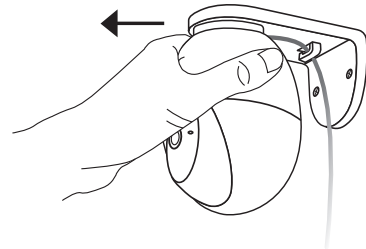
#### 3. Secure the Camera

Align the snap fit and slide the camera onto the bracket from outside in until it clicks into place. Route the USB cable under the buckle on the bracket.

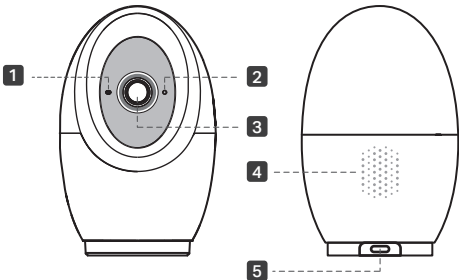


# How to Detach the Camera

Hold the camera and pull it from the inside outward to detach the camera.

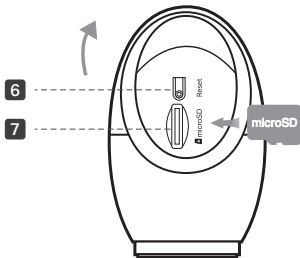


# Appearance



- 1 Status LED
- 2 Microphone
- 3 Lens
- 4 Speaker
- 5 USB Type-C Port

Tilt the camera lens up to find the RESET button and the microSD card slot.



- 6 RESET Button
  - Press and hold for 5s: Reset Wi-Fi settings (The LED will blink red quickly)
  - Press and hold for 10s: Reset to factory settings (The LED will blink red quickly and you will hear a sound)
- 7 microSD Card Slot

Insert a microSD card (not included) and initialize it on the Tapo app for local recording.

# LED Indication

Solid red	Starting up
Blinking red and green	Ready for setup
Blinking red slowly	Connecting to Wi-Fi
Solid amber	Connected to Wi-Fi
Solid green	Connected to the cloud
Blinking red quickly	Camera resetting
Blinking green quickly	Camera updating

For technical support, the user guide, warranty, and more information, please visit <https://www.tapo.com/support/>



- Keep the device away from water, fire, humidity or hot environments.
- Do not use damaged charger or USB cable to charge the device.
- Do not use any other chargers than those recommended.
- Do not use the device where wireless devices are not allowed.
- Adapter shall be installed near the equipment and shall be easily accessible.
- Use only power supplies which are provided by manufacturer and in the original packing of this product. If you have any questions, please don't hesitate to contact us.
- For indoor use only.
- Do not disassemble, repair or modify the product.
- Do not use the product if the casing has been broken. Danger of electric shock.
- Never touch the product with wet hands.
- Do not expose to heavy rain or any type of moisture.
- Do not place near automatically controlled devices such as fire alarms. Radio waves emitted from this product may cause such devices to malfunction resulting in an accident.
- Observe restrictions on using wireless products in fuel depots, chemical plants or when blasting operations are in progress.
- Do not use liquid to clean the product. Only use a dry cloth.
- Never put metal objects inside the product. If a metal object enters the product turn off the circuit breaker and contact an authorised electrician.
- This product is not intended to be used when providing medical care. Consult the manufacturer of any personal medical devices, such as pacemakers or hearing aids to determine if they are adequately shielded from external RF (radio frequency) energy.
- Do not use this product in health care facilities. Hospitals or health care facilities may be using equipment that could be sensitive to external RF energy.
- Do not use this product near water for example near a bath tub, wash bowl, kitchen sink or laundry tub, in a wet basement or near a swimming pool.
- The product should be kept free from excessive smoke, dust or high temperature and vibration.
- This product should not be exposed to direct sunlight

- Do not place heavy objects on top of the product.
  - When you leave the product unused for a long time unplug the product from the power outlet.
  - This product may interfere with other electronic products such as TV, radios, personal computers, phones or other wireless devices.
  - Operating Temperature: 0 °C ~ 40°C (32°F ~ 104°F)
- Please read and follow the above safety information when operating the device. We cannot guarantee that no accidents or damage will occur due to improper use of the device. Please use this product with care and operate at your own risk.

TP-Link hereby declares that the device is in compliance with the essential requirements and other relevant provisions of directives 2014/53/EU, 2009/125/EC, 2011/65/EU and (EU) 2015/863. The original EU declaration of conformity may be found at <https://www.tapo.com/en/support/ce/>

TP-Link hereby declares that the device is in compliance with the essential requirements and other relevant provisions of the Radio Equipment Regulations 2017.

The original UK declaration of conformity may be found at <https://www.tapo.com/support/ukca/>

©2025 TP-Link

